

Midwest Association
for Public Opinion Research



44th Annual Conference

November 22-23

**Where Methods and Substance Meet:
Reflecting the Present and Shaping the
Future of Public Opinion and Survey Research**

Final Program

NOV 23

Embassy Suites | Downtown Chicago | 600 N. State Street | Chicago, IL 60654

CONFERENCE AT A GLANCE

FRIDAY, NOVEMBER 22

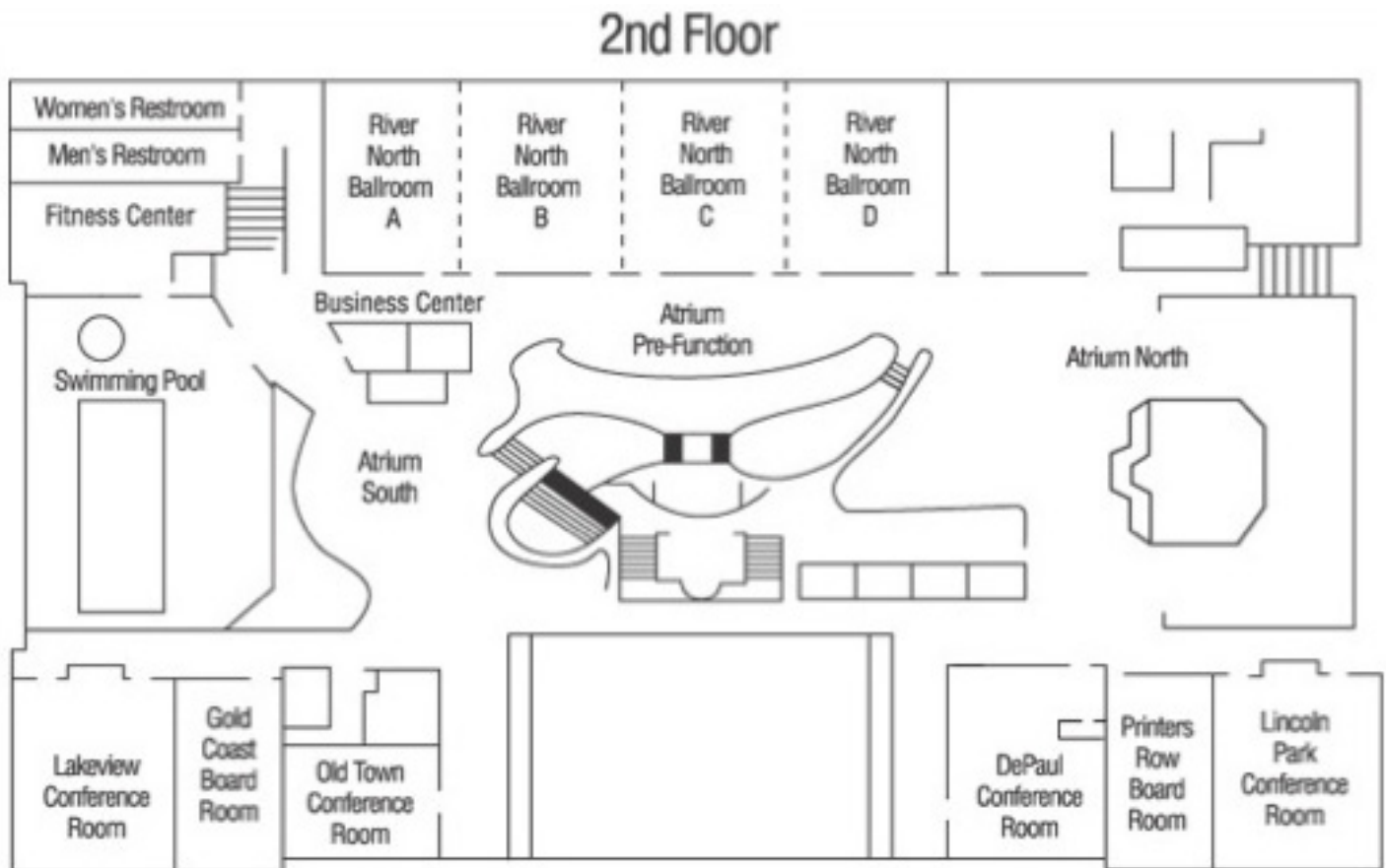
7:30 AM – 8:00 AM	Atrium South	Early Registration for Short Course and Interaction Working Group
7:40 AM – 10:00 AM	Outside DePaul	Refreshments
8:00 AM – 5:30 PM	Business Center	Sponsor Exhibit
8:00 AM – 10:00 AM	Lincoln Park	Short Course Brady West, University of Michigan: “Survey Weighting” (registration required)
8:00 AM – 10:00 AM	Lakeview	Interview-Respondent Interaction Working Group
8:00 AM – 4:30 PM	Atrium South	General Registration
10:15 AM – 11:45 AM	DePaul	Panel Paths to MAPOR
	Lakeview	Contacting and Engaging Respondents
	Rivernorth A	Advances in Survey Research through Machine Learning, Data Science, and Big Data
	Rivernorth B	Communication and Public Opinion
12:00 PM – 1:00 PM	Atrium North	Networking Lunch Buffet (ticket required)
1:15 PM – 2:45 PM	DePaul	Panel Interviewer Pace and Data Quality
	Lakeview	Social Media and Public Opinion 1: User and Platform Characteristics affecting Public Opinion
	Lincoln Park	Measuring Public Opinion on Social Issues and Policy
	Rivernorth A	Sampling
	Rivernorth B	News Session 1: Trust in Media and Politics
2:45 PM – 3:00 PM	Outside DePaul	Break and Refreshments
3:00 PM – 4:30 PM	Rivernorth BCD	Student Paper & MAPOR Fellow Awards
		Keynote Speaker Barbara Anderson, University of Michigan: “Privacy, Politics and Data for Policy in U.S. Censuses”
4:30 PM – 5:30 PM	Atrium South	President’s Reception (Cash Bar) Sponsor Tables; Poster Session Student Conference Registration Raffle

CONFERENCE AT A GLANCE

SATURDAY, NOVEMBER 23

8:00 AM – 3:00 PM	Atrium South	General Registration
8:00 AM – 10:00 AM	Outside DePaul	Refreshments
8:30 AM – 10:00 AM	DePaul	Questionnaire Design and Survey Implementation
	Lakeview	Social Media and Politics
	Lincoln Park	Measuring and Analyzing Health and Healthcare
	Rivernorth A	Examining New Modes for Surveys
	Rivernorth B	Panel The New News and Americans' Very Public Opinions: Is Journalism Informing Democracy?
10:15 AM–11:45 AM	DePaul	The Interviewer's Role in Data Collection
	Lakeview	Social Media and Public Opinion 2: Social Contexts Shaping Use and Public Opinion
	Lincoln Park	Measuring and Analyzing Identity and Diversity
	Rivernorth A	Cross Cultural Survey Design
	Rivernorth B	The Politics of Communicating About Science
11:45 AM – 1:15 PM		Lunch (on your own)
1:30 PM – 2:30 PM	Rivernorth BCD	Pedagogy Hour Justine Bulgar-Medina, NORC at the University of Chicago: "The Measurement of Sexual Orientation and Gender Identity in Surveys"
2:30 PM – 2:45 PM	Outside DePaul	Break and Refreshments
2:45 PM – 4:15 PM	DePaul	Open for in memoriam
	Lakeview	Panel Interviewers and Data Quality: Interactions, Operations, and Observations
	Lincoln Park	Measuring Work and Finance in Survey Research
	Rivernorth A	Web Surveys and Online Panels
	Rivernorth B	News Session 2: News, Media, and Ideology
4:30 PM – 5:30 PM	Lakeview	Annual Member Meeting

MAP OF THE EMBASSY SUITES



CONFERENCE SPONSORS

MAPOR acknowledges and thanks the following organizations for sponsoring the 2019 conference. Your support ensures that MAPOR can continue to offer a successful conference each year!

GOLD LEVEL SPONSORS

NORC at the University of Chicago

SILVER LEVEL SPONSORS

Ipsos Public Affairs | University of Chicago Survey Lab | EdChoice | Marketing Systems Group | University of Michigan Survey Research Operations, Survey Research Center | University of Michigan Program in Survey Methodology | RTI International | University of Wisconsin Survey Center | Dynata

BRONZE LEVEL SPONSORS

University of Northern Iowa, Center for Social & Behavioral Research | Gannon Center for Women and Leadership at Loyola University Chicago | Civis Analytics | Indiana University Center for Survey Research | Michigan State University, Institute for Public Policy and Social Research, Office for Survey Research | ReconMR-Reconnaissance Market Research | Research Support Services, Inc.

MAPOR OFFICERS

President	Ipek Bilgen, NORC at the University of Chicago
Vice-President/President-Elect	Ned English, NORC at the University of Chicago
Past President	Ron Langley, University of Kentucky
Conference Chair	Dana Garbarski, Loyola University Chicago
Associate Conference Chair	Sara Walsh, NORC at the University of Chicago
Secretary-Treasurer	Kevin Ulrich, University of Chicago Survey Lab
Member-at-Large	Mandy Sha, Independent Consultant
Member-at-Large	Mary Losch, University of Northern Iowa
Member-at-Large	Ashley Hyon, Marketing Systems Group
Webinars Coordinator	Patrick Hsieh, RTI International
Communications Coordinator	Justine Bulgar-Medina, NORC at the University of Chicago
Corporate Sponsor Coordinator	Allison Sullivan, Independent Consultant
Webmaster	Josh Pasek, University of Michigan
Student Liaison	Colleen McClain, University of Michigan

DETAILED SCHEDULE | FRIDAY NOVEMBER 22, 2019**Refreshments — Outside DePaul****Friday, 7:40 AM – 10:00AM***Sponsored by Ipsos Public Affairs***Short Course (registration required)****Friday, 8:00 AM – 10:00AM***Sponsored by the University of Chicago Survey Lab***Survey Weighting: Everything from Basic Concepts to Advanced Applications****Lincoln Park****Presenter: Brady West, University of Michigan**

This workshop will provide participants with a variety of practical information about survey weighting. The workshop will begin with a discussion of the basics regarding the construction of survey weights for both probability and non-probability samples, and the development of replicate weights for variance estimation. Issues related to the appropriate use of weights in survey analysis, such as the loss of efficiency in survey estimates when weights are not informative and whether to use weights in regression analysis, will also receive heavy focus. The workshop will then turn to the best practices for the construction and application of survey weights in more advanced settings, including dual-frame designs, panel studies (where attrition can become a serious issue), and multilevel modeling. Participants will be provided with materials and a bibliography, and there will be time for a question and answer session.

Topics will include

- Construction of survey weights to account for all aspects of a sample design
- Adjusting weights for survey nonresponse
- Using weights appropriately in survey data analysis
- Whether to use weights in regression modeling
- Development of weights for dual-frame designs, panel studies, and multilevel modeling

Round Table Discussion**Friday, 8:00 AM – 10:00AM****Interviewer-Respondent Interaction Working Group****Lakeview****Moderators: Kristen Olson and Jolene Smyth, University of Nebraska-Lincoln**

In February 2019, interviewers and their roles in survey errors was the focus of a small group workshop in Lincoln, Nebraska. The series of oral and poster presentations sparked several insightful and open discussions. One key part of this workshop was about the relationship between academic journal research findings and the day-to-day practice and implementation of surveys. One of the big gaps identified had to do with interviewer training. This year's MAPOR discussion will pose some open questions that arose during that discussion about this nexus between research on interviewer behaviors and practice in training interviewers. More information available at

<http://www.mapor.org/interactionworkgroup2019/>

M

PROGRAM IN

Survey Methodology

The Michigan Program in Survey Methodology (MPSM) is a program where students learn the science of surveys. Students in the program receive theoretical grounding in all aspects of survey methodology, from sample design and measurement, to modes of data collection, statistical estimation, questionnaire design and probability sampling methods. Students have the opportunity to explore novel ways to develop applications of survey methodology in a wide variety of fields.

For more information:

<http://www.psm.isr.umich.edu/>
Email: michpsm.isr@umich.edu

**M** ISR

UNIVERSITY OF MICHIGAN
INSTITUTE FOR SOCIAL RESEARCH

www.facebook.com/UM.PSM/



www.twitter.com/MichPSM



Paper Session 1

Friday, 10:15 AM – 11:45 AM

Panel: Paths to MAPOR

DePaul

Moderator: Sara Walsh, NORC at the University of Chicago

This professional development panel aimed specifically to serve new-to-MAPOR, early career, and student members, will focus on the various paths' folks take that lead them to MAPOR. While MAPOR's background is as a professional organization serving public opinion and survey researchers, our membership consists of a community of researchers and academics from a myriad of disciplines and career paths. In order to highlight and celebrate MAPOR's diverse membership, each panelist will represent a different route taken to MAPOR. For example, the panel will include recent graduates or students preparing to transition to their careers, researchers or professionals from a non-survey or non-public opinion background, and survey operations professionals from non-academic backgrounds. For the first half of the session, panelists will respond to a series of moderator-led questions about their backgrounds, their path to MAPOR, career choices, goals, and mentorship. In the last half of the session, the discussion will be opened up to session attendees to ask questions of and interact with panelists.

Panelists:

- Hillary Hanson, University of Chicago Survey Lab
- Y. Patrick Hsieh, RTI International
- Ashley Kirzinger, Kaiser Family Foundation
- Loren Saulsberry, University of Chicago
- Jerry Timbrook, University of Nebraska-Lincoln



**Finding answers
through multi-method
research and analysis
since 1967**

2304 College St Cedar Falls, IA 50614-0402

(v) 319.273.2105

(f) 319.273.3104

(e) csbr@uni.edu

uni.edu/csbr/

Contacting and Engaging Respondents

Lakeview

Chair: Benjamin Schapiro, NORC at the University of Chicago

Nonresponse Trends in the American Time Use Survey over 2004-2017

Zeping Tao, University of Michigan-Ann Arbor; Z. Tuba Suzer-Gurtekin, University of Michigan-Ann Arbor

An Experimental Study on the Effects of Sponsor Emphasis and Incentive Packaging on Response

Kim Meiergerd, University of Nebraska-Lincoln; Amanda Ganshert, University of Nebraska-Lincoln; Lindsey Witt-Swanson, University of Nebraska-Lincoln; Jolene Smyth, University of Nebraska-Lincoln

Third Time's a Charm? Analysis of the Effect of Sending a Third Questionnaire for Mail Surveys

John Stevenson, University of Wisconsin-Madison; Lindsey Witt-Swanson, University of Nebraska-Lincoln; Jennifer Dykema, University of Wisconsin-Madison; Nadia Assad, University of Wisconsin-Madison; Brendan Day, University of Wisconsin-Madison

Effect of Pre- and Post-Paid Incentives on Mail Survey Response

Neomi Rao, University of Chicago; Kevin Ulrich, University of Chicago

Using QR Codes as an Alternative Survey Invitation Method

Bob Ksiazek, Ipsos; Joann Franzen, Ipsos

Informed Consent and Non-Coercive Incentive Considerations When Working with Marginalized Populations

Daniela Glusberg, Research Support Services Inc.; Jessie Engel, Research Support Services Inc.; Alisú Schoua-Glusberg, Research Support Services Inc.

Advances in Survey Research Through Machine Learning, Data Science, and Big Data

Rivernorth A

Chair: Ronald Langley, University of Kentucky

Taking a Dive in the Big Data Lake: Using Web Scraped Data for Constructing Sampling Frames of Pools

Trent Buskirk, Bowling Green State University; Adam Eck, Oberlin College

Picking Up Drop Points in Address-Based Samples

Cameron McPhee, American Institutes for Research; David Dutwin, SSRS

A Doubly Robust Weighting Approach for Inference in Big Data Using Bayesian Non-Parametric Modeling

Ali Rafei, University of Michigan; Michael R. Elliott, University of Michigan; Carol A.C. Flannagan, University of Michigan

Imputation of Missing Values in High-Dimensional Survey Data via Automated Sequential Model Selection

Micha Fischer, University of Michigan

Facial Recognition Technology: Population Attitudes and Implications for Survey Methodologies

Thomas Carpenter, Ipsos Public Affairs; Laura Mulholland, Ipsos Public Affairs; Alexa Dibenedetto, Ipsos Public Affairs

NORC

at the UNIVERSITY of CHICAGO



Insight.
Innovation.
Impact.

For more than 75 years NORC at the University of Chicago, a non-partisan and objective research institution, has helped clients around the world create, gather, and analyze data of all kinds. NORC is your partner of choice when you need meaningful insights that address society's most critical issues.

Proud Gold Level Sponsor of MAPOR.

www.norc.org • info@norc.org

Communication and Public Opinion**Rivernorth B****Chair: Chris Yim, Loyola University Chicago**

Covering Vietnam: International Media Framing of the 2019 North Korea-United States Summit
Won Yong Jang, University of Wisconsin at Eau Claire

The Dynamics of Meaning: A Textual Analysis of the Word “Liberal” in Mass Media
Tim Vance, Murray State University; Candace Vance, Murray State University

Message Fatigue Caused by Message Framing of Anti-Smoking Campaigns: Focus on Psychological Distance
Kibum Youn, Colorado State University; Young Eun Park, Colorado State University;
Hyunsang Son, Colorado State University

Communication with Farmers about Conservation: A Systematic Review
Laura Witzling, Iowa State University; Dara M. Wald, Iowa State University

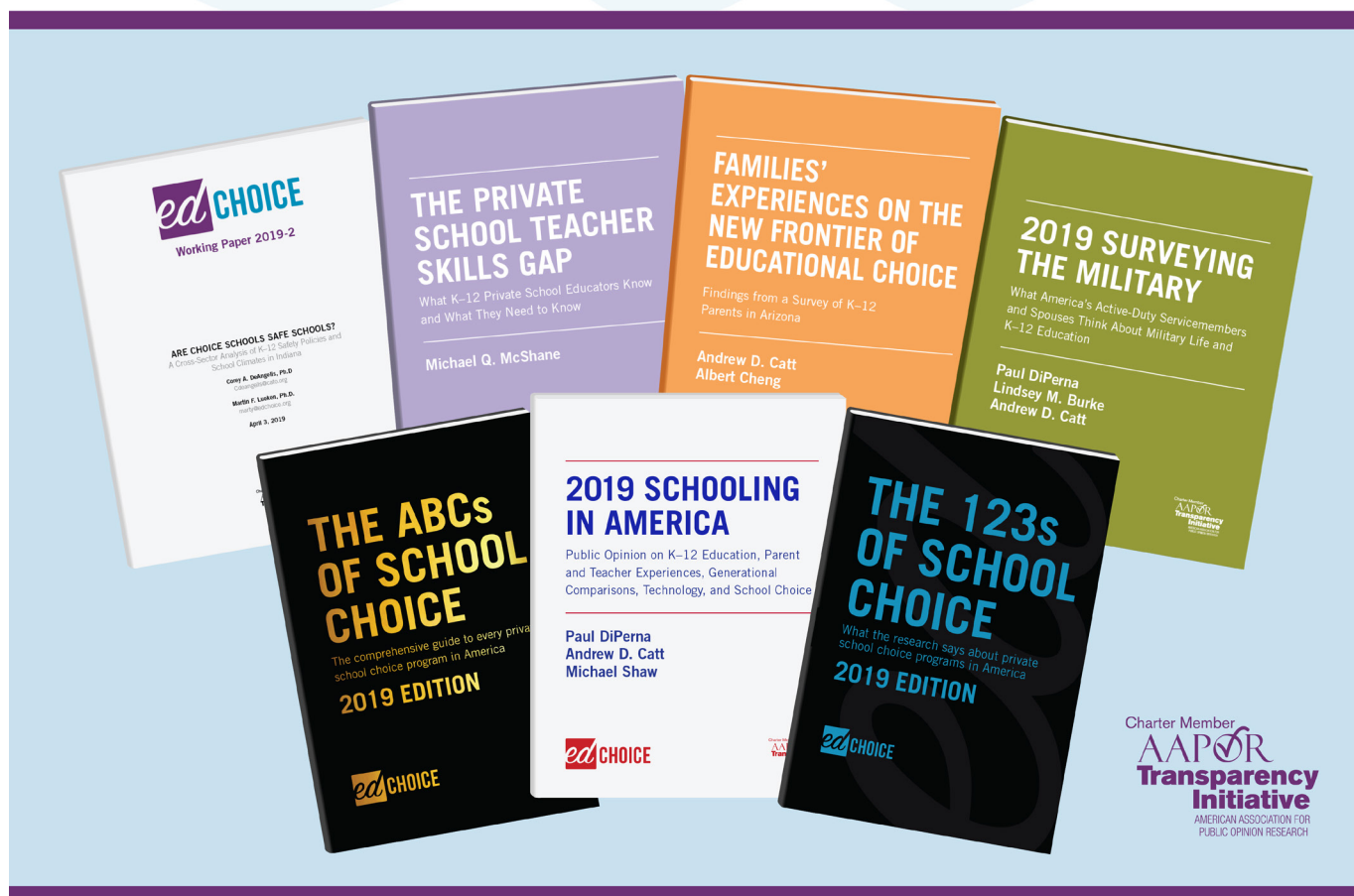
Networking Lunch Buffet**Atrium North****Friday, 12:00 PM - 1:00 PM***Sponsored by EdChoice*

Make new connections, connect with old friends, or network based on different topics and interest groups during our Grand Lunch Buffet. Tables will be marked with different themes. Find a table you are interested in to network and discuss with other conference attendees!



Advancing high-quality research and analysis of educational choice programs and policies across the United States.

EDCHOICE.ORG



Paper Session 2**Friday, 1:15 PM – 2:45 PM****Panel: Interviewer Pace and Data Quality****DePaul*****Chair and Discussant: Jolene Smyth, University of Nebraska-Lincoln***

The pace at which interviewers read survey questions is an important influence on data quality in surveys. Interviewers who read questions too quickly or too slowly may disrupt the cognitive process by which respondents formulate answers. Despite this importance, research on interviewer pace is limited. This panel presents four examinations of interviewer pace. First, Jennifer Kelley examines whether question-level pace measures can be used to detect reading errors in survey questions. Using data from timestamps and behavior codes, this paper examines alternative operationalizations of pace and their relationship to question reading deviations. Second, the consequences of interviewer pace on respondents is a fundamentally important question for understanding how interviewers affect data quality. Allyson Holbrook examines whether interviewer pace of question reading is related to the pace at which a respondent answers a question and the quality of answers provided across four racial-ethnic groups. Third, whether different interviewers vary in how they administer different types of questions is relatively underexplored. As such, Dana Garbarski examines how question, interviewer, and respondent characteristics are related to response time on questions related to health, including whether the effects of question characteristics vary by interviewer experience. Finally, a robust finding is that interviewers speed up as they gain experience over the field period, but it is not clear how that speeding up occurs. To address this question, Kristen Olson examines changes in interviewer behaviors over the course of the field period in two telephone surveys, and whether these changes explain the difference in pace. Jolene Smyth will moderate this session and provide a discussion of these papers. Together, this panel provides a robust set of insights into how the pace at which interviewers administer survey questions affects the quality of data from surveys.

Panelists:

- Jennifer Kelley, University of Essex and University of Michigan
- Allyson Holbrook, University of Illinois Chicago
- Dana Garbarski, Loyola University Chicago
- Kristen Olson, University of Nebraska-Lincoln

Social Media and Public Opinion 1: User and Platform Characteristics Affecting Public Opinion

Lakeview

Chair and Discussant: Y. Patrick Hsieh, RTI International

The Role of Age, Gender, and Socioeconomic Status in Argentina's Social Media Repertoires
Mora Matassi, Northwestern University; Pablo Boczkowski, Northwestern University;
Eugenia Mitchelstein, Universidad de San Andrés

Blackish: Intraracial Perceptions and Attitudes within the African-American Community
Jordan Teske-Harrison, University of Wisconsin-Whitewater; Edward Frederick, University
of Wisconsin-Whitewater

Opinion Climate Change: Social Media, Algorithms and Opinion Expression
Benjamin Burnley, Middle Tennessee State University

Personalized News Media, Political Emotion and the Threat to Knowledge
Yan Liu, Sungkyunkwan University; Heejo Keum, Sungkyunkwan University

**Platforms as Frames: Examining Social Video Site Attributes' Potential to Influence
News Production**

Aaron Veenstra, Florida Atlantic University; Lu Fan, Southern Illinois University Carbondale;
Mohammad Alotaibi, Kuwait University; Zahedur Arman, Southern Illinois University
Carbondale; Mohammed Almistadi, Southern Illinois University Carbondale; Tahereh
Rahimi, Southern Illinois University Carbondale



Who will provide expert survey consultation,
instrument development, data collection, and analysis?

OSR Spartans Will.

 Office for Survey Research
MICHIGAN STATE UNIVERSITY
osr.msu.edu

Measuring Public Opinion on Social Issues and Policy

Lincoln Park

Chair: Rico Neumann, University of Washington

The Diffusion of an Innovation: The Globalization of Survey Research, 1936-2018
Tom W. Smith, NORC at the University of Chicago

Freedom of Expression: Another Look at How Much the Public Will Tolerate
Kyla Wagner, Syracuse University; Daniel Riffe, University of North Carolina at Chapel Hill

The Cry of a Revolutionary Spirit: Reactions to the Goals of Three U.S. Revolutionary Movements
Dennessa D. Gooden, Cleveland State University; Kimberly A. Neuendorf, Cleveland State University

Predictors of Knowledge about and Attitudes toward Palliative Care Among U.S. Adults
Julie Andsager, University of Tennessee

How to Make a Policy Successful: Effect of Collective Efficacy on Governmental Policy
Inho Park, Sungkyunkwan University

Partnering with world-class
researchers to push the
frontiers of survey research

Center for Survey Research at Indiana University

Quantitative and Qualitative Data Collection • Consulting Services • Analysis
csr.indiana.edu • csr@indiana.edu • 800-258-7691



INDIANA UNIVERSITY
**CENTER FOR SURVEY
RESEARCH**

The Wisconsin Longitudinal Study | The Midlife in the US III Study | Midwest Young Adult Study
 The National Survey of Families and Households | The Behavioral Risk Factor Surveillance Survey
 The School Leadership for Student Achievement Project | The National Health Measurement Survey
 The Wisconsin Moms Study | Outcomes of Women Undergoing Breast Surgery Study | Study of
 the Health of Wisconsin | The Family Health Study | Public Awareness of Nanotechnology Study
 Mental Health and Substance Abuse Services Study | Pregnancy Risk Assessment Monitoring
 System | Milwaukee Area Renter Study | VA Smoking Cessation Study | City of Madison
 Smoking Ban Study | The Badger Poll | Wisconsin DNR Recycling Study | The TEAM Study



UNIVERSITY of WISCONSIN SURVEY CENTER

Data Collection | Instrument Design | Study & Methods Consultation

University of Wisconsin Survey Center

*30+ years of Experience, Excellence,
 and Innovation in Survey Research*

— SINCE 1987 —

www.uwsc.wisc.edu | 608-262-9032



Sampling

Rivernorth A

Chair: Cameron McPhee, American Institutes for Research

Benefits of Using a Cost-Constrained Optimal Allocation for Oversample Studies – A Case Study

Rajesh Bhai, Marketing Systems Group; Mark Tucker, Purdue University; Kelly Lin, Marketing Systems Group; Ashley Rice, Purdue University

Blending ABS and Convenience Samples for a Population Health Survey

Urban Landreman, Hennepin County Public Health; Emily Thompson, Hennepin County Public Health

Predicting Contact in National Cell Phone Samples

Raphael Nishimura, University of Michigan

Evaluating Field Strategies Using Response Rate Prediction

Chang Zhao, NORC at the University of Chicago; Holly Hagerty, NORC at the University of Chicago; Ned English, NORC at the University of Chicago; Colm O'Muircheartaigh, NORC at the University of Chicago

Weighing ABS to Trend to RDD

David Dutwin, SSRS

Patterns and Implications of Data Fabrication: Evidence from a National Survey in Venezuela

Oscar Castorena, Vanderbilt University; Mollie J. Cohen, University of Georgia; Noam Lupu, Vanderbilt University; Elizabeth J. Zechmeister, Vanderbilt University

Ipsos KnowledgePanel® Omnibus

Ideal for Government & Academic Research

Only Ipsos KnowledgePanel® combines rigorous sampling methodology with the latest online survey technology to meet the high standards essential for federally funded research. You can rely on our experts to provide the scientific rigor required for scrutiny and peer review.

Ipsos KnowledgePanel Government and Academic Omnibus provides high caliber online research among the United States' largest probability-based sample necessary for government, academic and social science surveys.

Contact us today:

Bob Torongo
Senior Vice President, US, Public Affairs
2020 K St. NW, Washington, DC
robert.torongo@ipsos.com

ipsos.com/en-us/solution/knowledgepanel



News Session 1: Trust in Media and Politics**Rivernorth B****Chair: Lee Becker, University of Georgia****Who Can Spot Fake News? Examining Overconfidence with Survey, Experiment, and Web Traffic Data**

Benjamin Lyons, University of Utah; Andrew Guess, Princeton University; Jacob Montgomery, Washington University in St. Louis; Brendan Nyhan, University of Michigan; Jason Reifler, University of Exeter

Why Media Trust Matters in the Era of Fake News

Kwansik Mun, University of Wisconsin-Madison

National Media Systems and Affective Polarization: A Four-Country Comparative Analysis

Sam Wolken, Ohio State University

Media Trust across Societies: Cultural Root or Sincere Belief?

Chuan Liu, University of Wisconsin-Madison

Assessing the Influence of Spatial Indicators on Political Involvement in Rural America

William Bonnell, NORC at the University of Chicago; Nicole Willcoxon, NORC at the University of Chicago; Katie Simmons, NORC at the University of Chicago; Caroline Smith, NORC at the University of Chicago; David Sterrett, NORC at the University of Chicago

Mobilizing the Poor: The Conditional Impacts of Clientelism and Electoral Competition on Turnout

Neil S. Williams, University of Georgia; Tomas Okal, NORC at the University of Chicago

Break and Refreshments	Outside DePaul	Friday, 2:45 PM – 3:00 PM
-------------------------------	-----------------------	----------------------------------

Sponsored by Marketing Systems Group

Enjoy freshly brewed coffee, tea, and water, as well as tasty desserts.

Annual Address	Rivernorth BCD	Friday, 3:00 PM – 4:30 PM
-----------------------	-----------------------	----------------------------------

Sponsored by NORC at the University of Chicago

Presentation of Awards and New MAPOR Fellow Announced**Keynote Address: “Privacy, Politics and Data for Policy in U.S. Censuses”****Barbara Anderson**

Ronald A. Freedman Collegiate Professor of Sociology and Population Studies at University of Michigan and former chair of the Census Scientific Advisory Committee

President's Reception & Poster Session	Atrium South	Friday, 4:30 PM – 5:30 PM
---	---------------------	----------------------------------

Sponsored by University of Michigan Survey Research Operations, Survey Research Center

Join us for drinks (cash bar) and appetizers and celebrate MAPOR's 44th birthday! The poster session will be going on and you can meet some of our sponsors in person.

Student Conference Registration Raffle	Atrium South	Friday, 5:30 PM
---	---------------------	------------------------

Sponsored by the University of Michigan Program in Survey Methodology

MAPOR's student members are automatically entered into a raffle for free registration for next year's MAPOR conference!



qualitative • quantitative • survey translation
multilingual • hard-to-reach populations • small business

906 ridge ave. evanston il 60202 847-864-5677 researchsupportservices.com

POSTERS:

1. **A Text Mining Analysis of the Last Decade of MAPOR Programs**
Joe Murphy, RTI International; David Weaver, Indiana University
2. **Like Masks in a Carnival Dance, Investigating Role of Interviewer Identification in Phone Survey**
Alyssa McCoy, University of Northern Iowa; Rod Muilenberg, University of Northern Iowa; Ki H. Park, University of Northern Iowa; Erin Heiden, University of Northern Iowa; Mary Losch, University of Northern Iowa
3. **The Measurement of Sexual Attraction: Comparing In-Depth Interview Data and Cognitive Interview Data**
Dana LaVergne, Loyola University Chicago; Dana Garbarski, Loyola University Chicago
4. **The Influence of Statistical Presentation on Partisan Perceptions**
Kathryn Hansen, Loyola University Chicago; David Doherty, Loyola University Chicago
5. **Who Chooses? Exploring Judicial Selection, Abortion Jurisprudence, and Public Opinion in the United States**
Lauren Morrissey, Loyola University Chicago
6. **Exploring Media Framing of the Confirmation Process of Justices to the United States Supreme Court**
Ashley Fox, University of North Carolina at Chapel Hill
7. **Examining EMA Response Rates by Respondent Characteristics**
Kelly Pudelek, NORC at the University of Chicago; Lekha Venkataraman, NORC at the University of Chicago
8. **Exploring How Research Reaches the Public: Uncovering, Understanding, and Utilizing Altmetrics**
Ann Williams, Georgia State University
9. **Come to Your Senses: How the Format of Data Presentation Shapes Public Engagement**
Ann Williams, Georgia State University
10. **Disaggregating Public Perception of Aesthetic Surgeons**
Ikiltezilani Mazehuani, University of Chicago
11. **The Influence of User-Generated Content on Public Decision-Making**
Yingije Xie, Sungkyunkwan University
12. **The Influence of YouTube Advertising Disclosure on Viewing Intention and Purchase Intention**
Boya Zhou, Sungkyunkwan University; Ning Feng, Sungkyunkwan University
13. **The Effects of Existing Attitudes on the Harmfulness of Heat-Not-Burn Tobacco on the Choice of Article**
Young Seok Ju, Sungkyunkwan University



GENESYS

Statistically sound and precise samples that deliver projectable results



FIND THE RIGHT PEOPLE TO SURVEY!

Quality does not come automatically. It takes years of experience, a fusion of know-how and talent to build trust. A knack for understanding customer needs, and the attention to detail that really makes a difference.

30 years in business – dependable experience serving the survey research community.

We have the experts. MSG's team of statistical sampling experts will help you design a sample that meets the strictest requirements to ensure your data is accurate, defensible, and appropriate for your project, including imputation to adjust for missing data.

All of our samples ensure:

- ▼ Real Time Generation – Sample requests are submitted to run immediately.
- ▼ Accuracy – Sample frames are updated on an ongoing basis and all orders are subjected to rigorous quality control.
- ▼ Flexibility – Choose from many different demographic and/or geographic criteria.
- ▼ Quality and Efficiency – Optimizing efficiency and data quality. Customizations available.
- ▼ Full Service Support – Expert support at every stage of your project.
- ▼ Virtual GENESYS – Anytime/anywhere access using our web based sample generation platform.

DETAILED SCHEDULE | SATURDAY NOVEMBER 23, 2019

Refreshments	Outside DePaul	Saturday, 8:00 AM – 10:00AM
---------------------	-----------------------	------------------------------------

Sponsored by RTI International

Enjoy refreshments to start the morning.

Paper Session 3	Saturday, 8:30 AM – 10:00 AM
------------------------	-------------------------------------

Questionnaire Design and Survey Implementation

DePaul

Chair: Paul Lavrakas, Independent Consultant

Web Instrument Design Using a Series of Randomized Control Trials

Rishi Guharay, Civis Analytics; Franklin Marsh, Civis Analytics; Masa Aida, Civis Analytics;
Angelo Mancini, Civis Analytics

Investigating the Impact of Violations of the Left and Top Means First Heuristic on Response Behavior and Data Quality in a Probability-Based Online Panel

Jan Karem Höhne, University of Mannheim; Ting Yan, Westat

Using Readability Measurement Tools to Predict Data Quality in Self-Administered Surveys

Rachel Stenger, University of Nebraska-Lincoln; Jolene Smyth, University of Nebraska-Lincoln; Kristen Olson, University of Nebraska-Lincoln

Does Third Party Presence Affect Subjective Measures of Health?

Jerry Timbrook, University of Nebraska-Lincoln

Where to Place Sensitive Items in an Experiment? Pre- or Post-Treatment?

Sam Gubitz, Northwestern University; Tabitha Bonilla, Northwestern University; Amanda Sahar d'Urso, Northwestern University

Use of Gamification to Improve Respondent Engagement and Data Quality in Online Surveys

Michael Osher, NORC at the University of Chicago; Ipek Bilgen, NORC at the University of Chicago; Alyssa Kahle, NORC at the University of Chicago; Caroline Tipler, NORC at the University of Chicago; Brad Mason, NORC at the University of Chicago



RTI International is an independent, nonprofit research institute dedicated to improving the human condition. We integrate expertise in social and laboratory sciences, engineering, and international development to deliver the promise of science for the good of people, communities, and organizations worldwide.

delivering the promise of science
for global good



www.rti.org

Social Media and Politics**Lakeview****Chair: Yangsun Hong, University of New Mexico**

How Do Social Media affect Political Consumerism? The Role of Efficacy and Gender
Jiwon Kang, University of Wisconsin-Madison

Gaming is Bad for Society? Online Gaming, Social Skills, and Civic and Political Perceptions among Adolescents
Hyerin Kwon, University of New Mexico

Social Media and Political Trust: Vertical and Horizontal Aspects of Changing Social Capital
Sung Woo Yoo, SUNY Cortland

Populist Candidates and Their Messages on Social Media: Factors Influencing Audience Engagement
Heloisa Sturm Wikerson, University of Texas at Austin/Purdue University-Fort Wayne

Channel Tie Strength and Rumor Diffusion in the 2018 Korean Local Government Election
Gain Park, New Mexico State University; Hyun Soon Park, Sungkyunkwan University, Chris M. Yim, Loyola University Chicago

Text-Mining the Deep-Roots of Corruption
Francisco Abundis Luna, Parametría; Katia Guzman Martinez, Parametría

Measuring and Analyzing Health and Healthcare**Lincoln Park****Chair: Allison Sullivan, Independent Consultant**

Residents' Perceptions of Survey Participation and Methodology: Factors Influencing Response Rates
Colleen Colbert, Cleveland Clinic; Judith French, Cleveland Clinic; Andrei Brateanu, Cleveland Clinic; Amy Nowacki, Cleveland Clinic

Measuring eHealth Literacy: Assessing a Composite Construct Using Self-Rated Health and eHEALS
Fiona Chew, Syracuse University

Perceptual Mapping of Hospital CAHPS Results
Helen Fisun, Ipsos; Yasmin Schnayer, Ipsos; Atisha Amin, Ipsos; Alan Roshwalb, Ipsos

Analyzing Trends in Responses that Require a Heightened Level of Attention across Survey Methods
Thomas Carpenter, Ipsos; Constance Maslan, Ipsos; Atisha Amin, Ipsos; Dominick Hannah, Ipsos; Libby Snow, Ipsos

Evaluating Drug Treatment in Afghanistan Using Multimethod Approaches: Results and Implications
Matthew Courser, PIRE; Stephen A. Shamlan, PIRE; Linda Young, PIRE; April Schweinhart, PIRE; Cassandra Shepherd, PIRE

Examining New Modes for Surveys

Rivernorth A

Chair and Discussant: Cheryl Wiese, NORC at the University of Chicago

Mode Comparisons and Concerns for Experience Sampling Method

Benjamin Schapiro, NORC at the University of Chicago; Kelly Pudelek, NORC at the University of Chicago; Gwendolyn Rugg, NORC at the University of Chicago

To Text or Not to Text: Comparing Text Message Surveys, Initiations, and Traditional Survey Modes

Anthony Misiak, Ipsos; Libby Snow, Ipsos

Preferred Contact Mode and Response of Participants Completing Surveys during a Longitudinal Study

Kriston Koepp, NORC at the University of Chicago; Kathryn Gerber, NORC at the University of Chicago

Making the Most of the Tools We've Got: Using Video Communication Technologies to Collect Survey Data

Frederick Conrad, University of Michigan; Kallan Larsen, University of Michigan; Michael Schober, New School for Social Research; Andrew Hupp, University of Michigan; Ai Rene Ong, University of Michigan; Brady West, University of Michigan

What Can We Learn about Data Quality from Video Communication Paradata?

Ai Rene Ong, University of Michigan; Frederick Conrad, University of Michigan; Kallan Larsen, University of Michigan; Michael Schober, New School for Social Research; Andrew Hupp, University of Michigan; Brady West, University of Michigan



THE UNIVERSITY OF CHICAGO SURVEY LAB

DIVISION OF THE SOCIAL SCIENCES

We collect social scientific data and train students in data collection methods. We collaborate with academic researchers, nonprofit organizations, and university administrators in a variety of areas including childcare, health, hunger, sexuality, education, and the arts.

Questionnaire
Design

Qualitative
Studies

Mixed-Mode
Surveys

6030 S Ellis Avenue Chicago, IL 60637 • 773-834-7415 • surveylab.uchicago.edu

Panel: The New News and Americans' Very Public Opinions: Is Journalism Informing Democracy?

Rivernorth B

Moderator: Richard M. Perloff, Cleveland State University

The relationship between news and public opinion is complex, controversial, and a central issue for normative theorists of democracy. With the decline of mainstream gatekeepers, ceding of power to affectively centered social media that disdain facts (the journalist's stock-in-trade), public opinion is increasingly fragmented, unmoored, and adrift from classic democratic norms. This panel, composed of highly-regarded scholars in journalism and political communication, will tackle these issues, promising insights in concert with conference themes. After a short overview from panel organizer Richard M. Perloff of Cleveland State University, in "Contours and Normative Goals of the 21st Century News Environment," the five panelists will offer insights and ideas. Dan Berkowitz of Iowa will set the tone in "Journalism: Classic and Contemporary Approaches," viewing classic studies in news, including his own, through contemporary lenses, suggesting how news production and reception must be reframed to understand the rapidly shifting digital world. In an exquisitely contemporary follow-up, University of Illinois scholar Nikki Usher, in "Interactivity and Public Trust in News," will ponder the ways that interactive news reporting, infused with open source culture, can enhance (or impair) public understanding of political issues. Continuing the pivot from journalism to the public, David Weaver of Indiana University and Lars Willnat of Syracuse University, in "Public Views of Journalists and News Media Before and After Trump," describe new research on how the public views journalists and journalists think about their roles in a changing democracy. Finally, Sharon Meraz from University of Illinois at Chicago, in "Networked Gatekeeping in the Age of Trump," squares the circle by applying her scholarship on networked framing and agenda-setting to offer insights on just how news, with the colorful and controversial contours described in previous papers, empowers, disempowers and otherwise influences the public's perspectives on politics.

Panelists:

- Dan Berkowitz, University of Iowa
- Nikki Usher, University of Illinois
- David Weaver, Indiana University
- Lars Willnat, Syracuse University
- Sharon Meraz, University of Illinois at Chicago

Paper Session 4**Saturday, 10:15 AM – 11:45 AM****The Interviewer's Role in Data Collection****DePaul****Chair: John Stevenson, University of Wisconsin-Madison****Question Reading Deviations and Measurement Errors**

Jennifer Kelley, University of Essex; Tarek Al Baghal, University of Essex

Examining the Association between Interviewer Pace and Respondent Pace within Telephone Interviews

Angelica Phillips, University of Nebraska-Lincoln; Kristen Olson, University of Nebraska-Lincoln; Jolene Smyth, University of Nebraska-Lincoln

Do Interviewers Accurately Field Code Answers? An Experiment on the Effect of Number of Response Categories

Jolene Smyth, University of Nebraska-Lincoln; Kristen Olson, University of Nebraska-Lincoln

Too Many Irons in the Fire? Investigating Multitasking, Question Comprehension, and Interviewers' Observations

Ki Park, University of Northern Iowa; Erin Heiden, University of Northern Iowa; Eva Aizpurua, Trinity College Dublin; Mary Losch, University of Northern Iowa

Two Weeks and 1,200 Telephone Interviewers: Innovative Approaches Used to Efficiently Train Interviewers

Alicia Frasier, RTI International; Marion Schultz, RTI International; Rachel Tumin, RTI International; Rachael Rosenberg, RTI International

**Social Media and Public Opinion 2:
Contexts Shaping Use and Public Opinion****Lakeview****Chair: Sara Walsh, NORC at the University of Chicago****How News and National Images Shape Perceptions of the Sino-U.S. Trade War**

Lars Willnat, Syracuse University; Shuo Tang, Indiana University; J. Shi, Syracuse University; Ning Zhan, Syracuse University

CEO Apology Tweet: How Does it Sound Authentic in a Paracrisis in the Lens of Dialogic Engagement?

Chris Yim, Loyola University Chicago

How is Social Media Redefining Propaganda?

Samipa Khanal, University of Bridgeport

#MeToo in China: Social Movements under Multiple Forces' Control

Yibing Sun, University of Wisconsin-Madison

Authoritarian Attitudes toward Migration: The Case of Central America

Katia Guzman Martinez, Parametría; Francisco Abundis Luna, Parametría

Measuring and Analyzing Identity and Diversity**Lincoln Park****Chair: Rico Neumann, University of Washington****Gender Uprising? Populism, Anger, Political Efficacy, and Information Seeking in Trump's America**

Deborah Dwyer, University of North Carolina at Chapel Hill; Daniel Riffe, University of North Carolina at Chapel Hill; Martin Kifer, High Point University

How the Urban/Rural Political Divide Plays Out in America's Suburbs

Tomas Okal, NORC at the University of Chicago; David Sterrett, NORC at the University of Chicago

Exploring the Effect of Religious Beliefs and Practices on Political Attitudes

Caroline Smith, NORC at the University of Chicago; William Bonnell, NORC at the University of Chicago; Emily Alvarez, NORC at the University

Reframing Women's Issues: Which Policy Frames Mobilize Women?

Margaret Brower, University of Chicago

Threat, Prejudice, and Attitudes toward Immigrants and Refugees

Rita Nassar, Indiana University

Racial Inclusivity in Survey Research

Temeka Watts, Ipsos; Scarlett Smith, Ipsos; Madeleine Conrad, Ipsos

**GANNON CENTER FOR
WOMEN AND LEADERSHIP**

The Ann Ida Gannon, BVM, Center for Women and Leadership

- Empowers women to be leaders
- Promotes innovative and interdisciplinary research
- Supports dialogue on compelling issues related to women
- Advances women's rights and human rights

Learn how you can support the mission of the Gannon Center at

LUC.edu/gannon

Cross Cultural Survey Design

Rivernorth A

Chair: Matt Courser, PIRE

Minimizing Comparison Error in Cross-National and Cross-Cultural Surveys by Applying the Total Survey Error Paradigm

Tom W. Smith, NORC at the University of Chicago

Applying Sociolinguistics in Translating Respondent Letters to Encourage Survey Participation

Mandy Sha, Independent Consultant

Improving the Interviewer-Respondent Experience in Non-English Data Collection Instruments

Brianda Perez, U.S. Census Bureau; Lily Kapaku, U.S. Census Bureau

Not a Copy and Paste: Creating Non-English Data Collection Instrument

Lily Kapaku, U.S. Census Bureau; Brianda Perez, U.S. Census Bureau

Measuring Whether Respondents Ask for Clarification on Problematic Questions

Evgenia Kapousouz, University of Illinois at Chicago; Timothy Johnson, University of Illinois at Chicago; Allyson Holbrook, University of Illinois at Chicago

Using a Multidimensional Nominal Response Model to Measure Acquiescence

Fernanda Alvarado-Leiton; University of Michigan

525 Seats for Telephone Data Collection



- 500+ TCPA Compliant U.S. CATI Stations
- DBE, MBE and HUB Certified
- Multi-mode Capabilities
- Bilingual Interviewers
- In-house CATI Platforms include Voxco and WinQuery
- Experienced in a wide variety of client hosted platforms
- Experienced in working with government and academic institutions/survey research centers
- Familiar with IRB protocols and Human Subjects Protection Training
- HIPAA compliant including staff compliance training
- Network and physical security exceeds industry standards
- State of the art IT infrastructure with fault tolerant telephony, network and power systems



LEARN MORE AT [RECONMR.COM](https://reconmr.com)

The Politics of Communicating About Science

Rivernorth B

Chair and Discussant: Robin Blom, Ball State University

Trust Matters: How Does Social Media Exposure Lead to Public Support for HPV Vaccination-Related Policy?

Sang-Hwa Oh, University of Illinois at Urbana-Champaign; Chul-Joo Lee, Seoul National University

Effects of Vaccine-Related Conspiracy Theories on Chinese Young Adults' Perceptions of the HPV Vaccine

Li Chen, West Texas A&M University; Yafei Zhang, West Texas A&M University; Xianwei Wu, University of Iowa; Rachel Young, University of Iowa; Ge Zhu, University of Iowa

Inoculation Against Third-Person Perceptions? Examining the Role of Public Misperceptions

Robert McKeever, University of South Carolina; Brooke W. McKeever, University of South Carolina

The Effects of Politicization and Inoculation in the Accuracy and Risk Perceptions of Science Issues

Soyoung Kim, Sungkyunkwan University; Heejo Keum, Sungkyunkwan University

Framing, Information, & Norms: Using Motivated Reasoning to Explain Effective Science Communication

Robin Bayes, Northwestern University; James N. Druckman, Northwestern University; Avery Goods, Northwestern University; Daniel C. Molden, Northwestern University

Lunch	Saturday, 11:45 AM – 1:15 PM
--------------	-------------------------------------

On your own

Pedagogy Hour	Rivernorth BCD	Saturday, 1:30 PM – 2:30 PM
----------------------	-----------------------	------------------------------------

Sponsored by the University of Wisconsin Survey Center

“The Measurement of Sexual Orientation and Gender Identity in Surveys”

Justine Bulgar-Medina

NORC at the University of Chicago

Break and Refreshments	Outside DePaul	Friday, 2:30 PM – 2:45 PM
-------------------------------	-----------------------	----------------------------------

Sponsored by Dynata

Enjoy freshly brewed coffee, tea, and water, as well as tasty desserts.

DePaul is open to begin to gather and reflect about MAPOR members lost this year.

Paper Session 5**Saturday, 2:45 PM – 4:15 PM****Open for in memoriam****DePaul**

For those who want to gather and reflect about MAPOR members lost this year.

Panel: Interviewers and Data Quality: Interactions, Operations, and Observations**Lakeview****Chair and Discussant: Jennifer Dykema, University of Wisconsin-Madison**

This panel explores interviewers and data quality from four different, but interrelated, perspectives. Starting with an overview of the initial research on interviewers by Charlie Cannell and his colleagues, Peter Miller, as the author of this paper, will provide insights into how this work continues to influence work on interviewers and the interviewer-respondent interaction today. We then turn to how well interviewers can observe the interviewer-respondent interaction and record these measures in observations. This paper, presented by Brady West, uses latent class analyses to show the utility of these observations in identify data quality. Fundamentally, the interviewer-respondent interaction depends on training interviewers. As such, we then turn to an empirical update to General Interviewer Training, in which Nora Cate Schaeffer uses current research on interviewers and data quality to inform how interviewers should be trained to obtain codable answers. Finally, we turn to an underresearched area where interviewers have great discretion and can have large effects on data quality - decisions to contact a sample unit. Here, Jamie Wescott presents evidence from a telephone survey in which interviewers were assigned to cases and "owned" them throughout the data collection period. This paper documents how interviewers make these decisions and the effect of these decision on nonresponse-related data quality.

Jennifer Dykema will serve as chair and discussant for this panel, providing insights into how these four papers contribute to our understanding of the role of interviewers and data quality in sample surveys.

Panelists:

- Peter Miller, Northwestern University
- Brady West, University of Michigan
- Nora Cate Schaeffer, University of Wisconsin-Madison
- Jamie Wescott, RTI International

Measuring Work and Finance in Survey Research**Lincoln Park****Chair: Kristen Koepp, NORC at the University of Chicago****The Structure of Scientific Collaboration in the Pages of Public Opinion Quarterly**

Jerry Timbrook, University of Nebraska-Lincoln; Robin Gauthier, University of Nebraska-Lincoln

Individual Innovativeness Revisited and Reconfigured: Generalized Domain Innovativeness

Brian F. Blake, Cleveland State University; Kimberly A. Neuendorf, Cleveland State University; Steven Given, Cleveland State University; Richard LaRosa, California University of Pennsylvania; Michael Horvath, Cleveland State University; Eric Brandt, Cleveland State University

Dollars and Sense: Measuring Financial Health

Jennifer Berg, Ipsos; Julie Wilson, Navient; Sue Berg, Ipsos

What Really Matters to Employees: Predictors and Drivers of Workplace Satisfaction

Katie Russo, Ipsos; Jennifer Berg, Ipsos

Web Surveys and Online Panels**Rivernorth A****Chair and Discussant: Trent Buskirk, Bowling Green State University****Quality of Commercial Data: Temporal Stability for Targeting Population Subgroups**

Paul Burton, University of Michigan; Sunghee Lee, University of Michigan

Crowdsourcing for Recruiting Hard-To-Reach Populations: An Example of Recruiting Military Veterans

Y. Patrick Hsieh, RTI, International; Leyla Stambaugh, RTI International; Herschel Sanders, RTI International; Michael Wenger, RTI International; Jessica Morgan, RTI International

Recruitment Mailing Design Experiments for a Probability-Based Research Panel

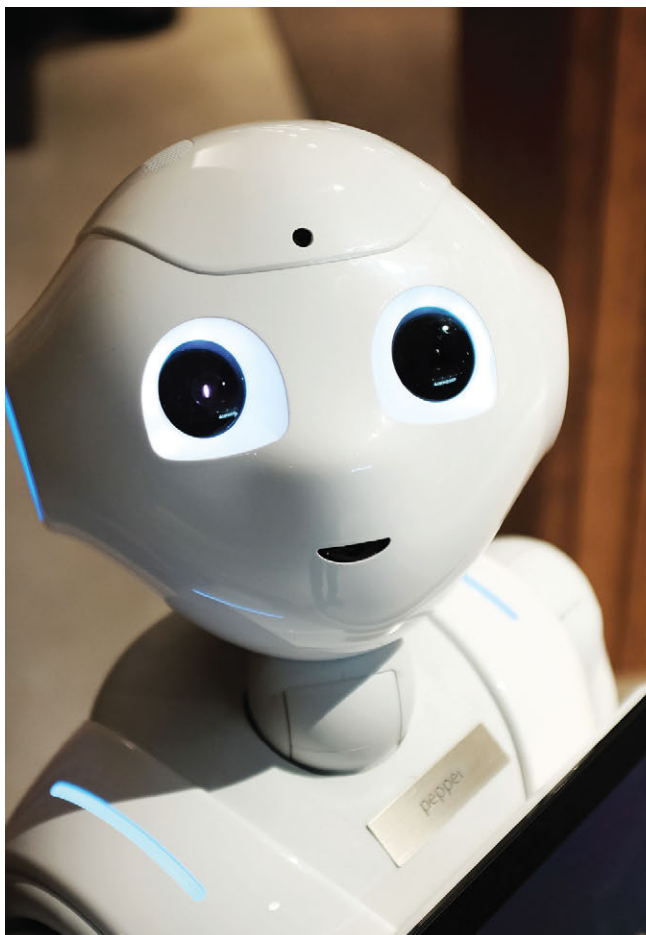
Cheryl Wiese, NORC at the University of Chicago; Ipek Bilgen, NORC at the University of Chicago; Lindsay Liebert, NORC at the University of Chicago; Qianyin Huang, NORC at the University of Chicago; Kanru Xia, NORC at the University of Chicago; Roopam Singh, NORC at the University of Chicago

Collecting Online Survey Data: A Comparison of Data Quality among MTurk and Panels

Sherice Gearheart, Texas Tech University; Bingbing Zhang, Pennsylvania State University

Controlling Satisficing on Web Surveys Using Click-Timing Paradata

Franklin Marsh, Civis Analytics; Rishi Guharay, Civis Analytics; Masahiko Aida, Civis Analytics; Angelo Mancini, Civis Analytics



The robot takeover is coming.

Civis Analytics knows people.

We also know one-size-fits-all surveying won't fit all of your needs. Our Survey products are tailored to your individual research objectives.

Make the robots work for you.

civisanalytics.com





INSTITUTE FOR SOCIAL RESEARCH • SURVEY RESEARCH CENTER
SURVEY RESEARCH OPERATIONS
UNIVERSITY OF MICHIGAN

Social Science in the Public Interest since 1946

Proud sponsor of the 2019 MAPOR Annual Conference

Survey Research Operations (SRO) provides technical and operational services for national, international and regional studies in all modes of data collection.

SRO services include:

- *Proposal development*
- *Sample design, implementation & monitoring*
- *General methodological and statistical consultation*
- *Questionnaire design*
- *Technical systems design and development*
- *Project management*
- *Data collection (qualitative and quantitative)*
- *Data processing*
- *Weighting, estimation, imputation & statistical analysis*

For more information about SRO:

Stephanie Chardoul

schardou@umich.edu

330 Packard St.

Ann Arbor, MI 48104

<https://www.src.isr.umich.edu/services/survey-research-operations/>



News Session 2: News, Media, and Ideology**Rivernorth B****Chair: Chuan Liu, University of Wisconsin-Madison****The Opioid Abuse Epidemic and Setting the News Media Agenda Nationally and in Four Appalachian State**

Justin Kavlie, University of North Carolina at Chapel Hill; Daniel Riffe, University of North Carolina at Chapel Hill

In Spite of Errors: Trust in the Media, Partisanship, and Perceived Journalistic Quality

Tamar Wilner, University of Texas at Austin; Ryan Wallace, University of Texas at Austin; Ivan Lacasa-Mas, Universitat Internacional de Catalunya; Emily Goldstein, University of Texas at Austin

News Choices and Opinion Formation Based on Sourcing, Not Content: An Eye-Tracking Exploratory Story

Robin Blom, Ball State University; Breanna Daugherty, Ball State University; Tim Huang, Ball State University

Extending Definitional Boundaries: South Korean Perspectives on Fake News in Post-Impeachment Era

Hyungjin Gill, University of Wisconsin-Madison; Moonhoon Choi, University of Wisconsin-Madison; Hernando Rojas, University of Wisconsin-Madison

Pledge Type and Partisans' Responsiveness to Campaign Promises in the U.S.

Mine Tafolar, University of Illinois at Chicago

Portrayal of U.S. – Egyptian Relations in the Era of President Trump Focusing on Terrorism

Nermeen Khedr, Cairo University

Annual Member Meeting	Lakeview	Saturday, 4:30 PM – 5:30 PM
------------------------------	-----------------	------------------------------------

MAPOR President Ipek Bilgen will lead the annual member and business meeting.

IN ADDITION TO OUR SPONSORS, MAPOR EXTENDS SPECIAL THANKS TO

- CVENT for generous partnership in supporting our online registration.
- RTI International for providing laptops for the session rooms
- The University of Chicago Survey Lab for providing iPads and a laptop to support onsite registration.
- NORC at the University of Chicago Desktop Publishing for professionally editing the layout of the program.

MAPOR FELLOWS | MAPOR PRESIDENTS

MAPOR FELLOWS

1988 Doris Graber
1989 George Donahue, Clarice Olien & Phillip Tichenor
1990 Jack McLeod
1992 Donna Charron
1993 David H. Weaver
1994 George Bishop
1996 Lee Becker
1997 Paul J. Lavrakas
1998 Leo Jeffres
1999 Mark Miller
2000 Cecilie Gaziano
2002 Michael Traugott
2003 Richard M. Perloff
2004 Robert P. Daves
2005 Sharon Dunwoody
2006 K. "Vish" Viswanath
2007 Allan L. McCutcheon
2008 Robert M. Groves
2010 Albert Gunther
2011 Stephen E. Everett
2012 Peter V. Miller
2013 Patricia Moy
2014 Tim Johnson
2015 Nora Cate Schaeffer
2016 Julie Andsager and Joe Murphy
2017 John Stevenson
2018 John Loft

MAPOR PRESIDENTS

1976-77 Donna S. Charron
1977-78 George Bishop
1978-79 Gene Telser
1980-81 Doris Graber
1981-82 Andrew J. Morrison
1982-83 MariJean Suelzle
1983-84 Lee B. Becker
1984-85 Barbara A. Bardes
1985-86 D. Charles Whitney
1986-87 David H. Weaver
1987-88 Leo Jeffres
1988-89 Cecilie Gaziano
1989-90 Sharon Dunwoody
1990-91 M. Mark Miller
1991-92 Garrett O'Keefe
1992-93 Robert P. Daves
1993-94 Paul J. Lavrakas
1994-95 Richard M. Perloff
1995-96 William Elliott
1996-97 Ellen M. Dran
1997-98 Fiona Chew
1998-99 Sherry Marcy
1999-00 Stephen E. Everett
2000-01 William Rosenberg
2001-02 K. "Vish" Viswanath
2002-03 Julie Andsager
2003-04 Allan L. McCutcheon
2004-05 Douglas Blanks Hindman
2005-06 Dietram A. Scheufele
2006-07 David Tewksbury
2007-08 Ward Kay
2008-09 Patricia Moy
2009-10 Weiwu Zhang
2010-11 Timothy P. Johnson
2011-12 Michael Traugott
2012-13 Joe Murphy
2013-14 Kristen Olson
2014-15 Allyson Holbrook
2015-16 Trent Buskirk
2016-17 Matthew Courser
2017-18 Ron Langley
2018-19 Ipek Bilgen

NOTES

THANK YOU

Share your conference experience by
tagging #MAPOR19

Facebook: @MidwestAPOR

Twitter: @MidwestMAPOR